

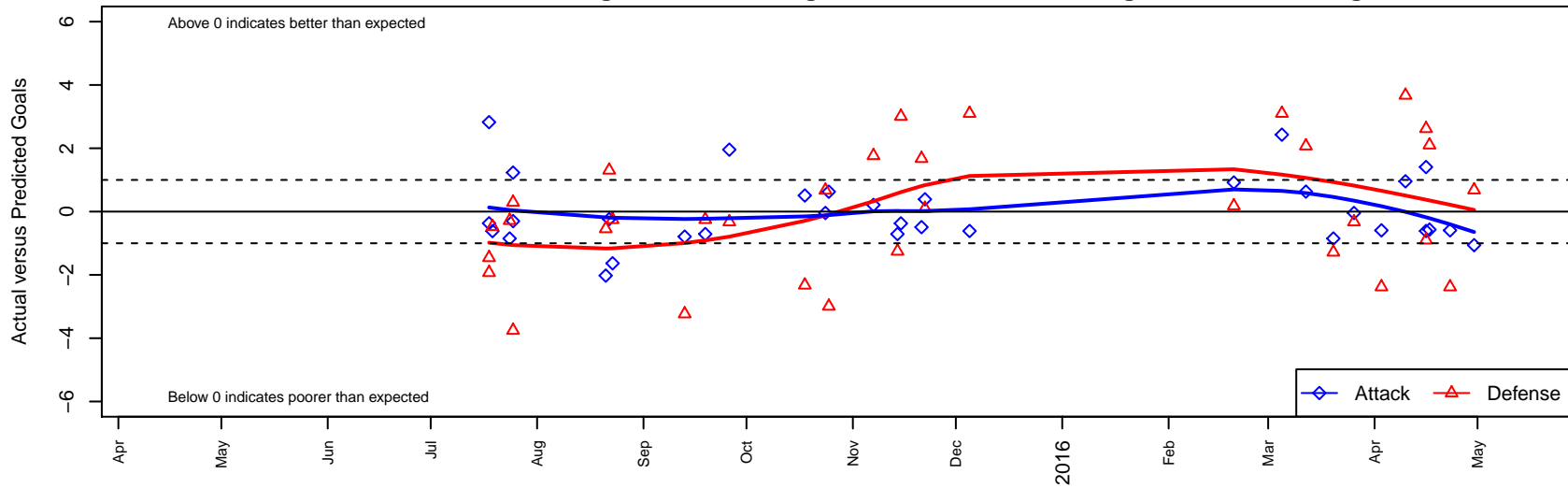
FPSC Fury Black G04

Franklin Pierce SC
 Tacoma, WA
 G04 total strength=305
 attack=0.26 defense=0.13
 fall league = PSPL WSPL U11
 spr league = Spr PSPL Classic 1 U11

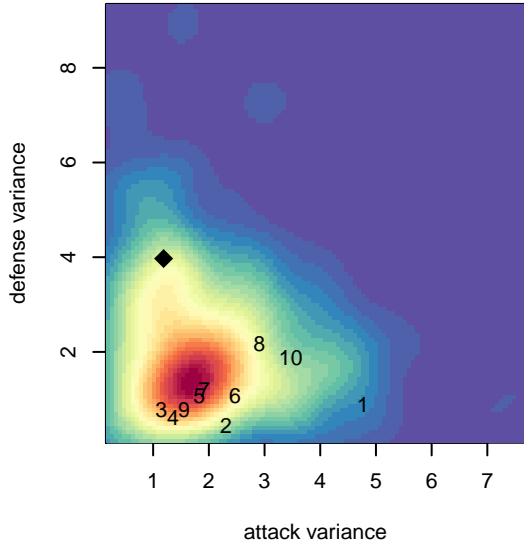
alt names used:
 FPSC Fury G04 Black
 FPSC Fury G04 Black
 FPSC Fury G04 Black
 Fury G04 Black
 FPSC Fury G04 Black
 FPSC FURY G04 BLACK (WA)

Venues played:
 2015 KITG GU11 Red
 2015 Sounders FC Cup GU10-11
 2015 Xtreme Cup GU11 Gold
 2015 PSPL WSPL U11
 2015 Spr PSPL Classic 1 U11
 2015 WA Cup GU11 Gold/Silver U11

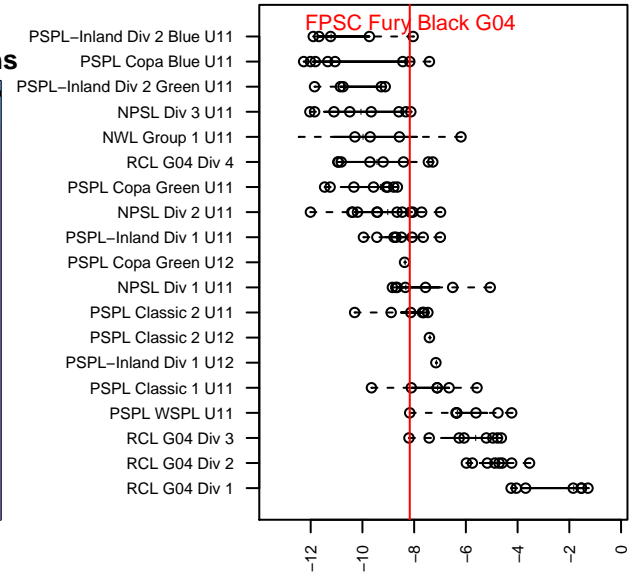
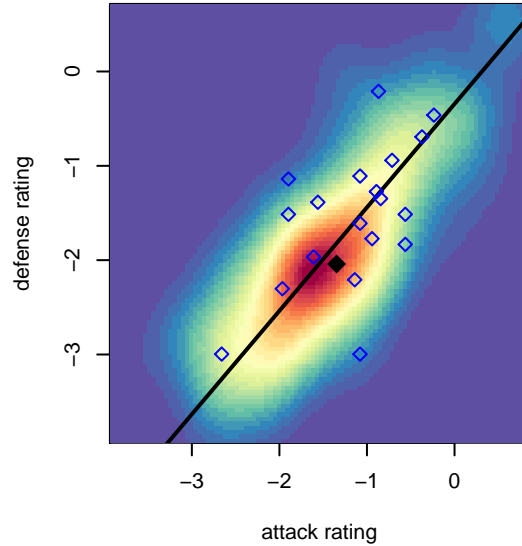
FPSC Fury Black G04
 Dots are actual minus expected GF (blue circles) and GA (red triangles).
 Blue line is smoothed change in attack strength. Red is smoothed change in defense strength.



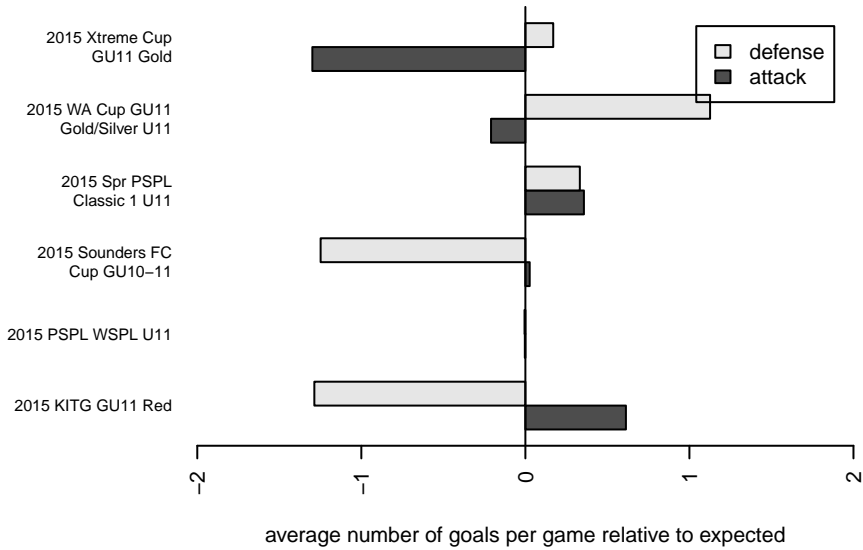
**attack and defense variance (black dot)
relative to other teams
and top 10 in region**



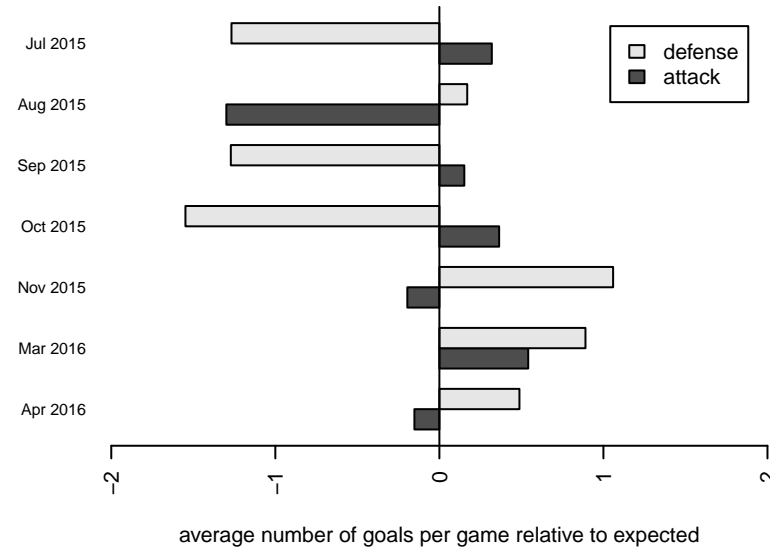
**attack and defense rating
relative to others at age
and all opponents in last 13 months**



Performance relative to 13 month average



Performance relative to 13 month average



| date | home | | away | | venue | pred.home | pred.away |
|------------|---------------------------|----|---------------------------|---|----------------------------------|-----------|-----------|
| 2016-04-30 | SSC Shadow Rapinoe G04 | 4 | FPSC Fury Black G04 | 0 | 2015 WA Cup GU11 Gold/Silver U11 | 4.68 | 1.06 |
| 2016-04-23 | NW United Premier G04 | 7 | FPSC Fury Black G04 | 1 | 2015 Spr PSPL Classic 1 U11 | 4.62 | 1.59 |
| 2016-04-17 | FPSC Fury Black G04 | 1 | TC United G04 | 2 | 2015 WA Cup GU11 Gold/Silver U11 | 1.57 | 4.10 |
| 2016-04-16 | NW United Premier G04 | 2 | FPSC Fury Black G04 | 3 | 2015 WA Cup GU11 Gold/Silver U11 | 4.62 | 1.59 |
| 2016-04-16 | MVP Marauders Navy G04 | 5 | FPSC Fury Black G04 | 0 | 2015 WA Cup GU11 Gold/Silver U11 | 4.10 | 0.61 |
| 2016-04-10 | Wenatchee Fire Black G04 | 0 | FPSC Fury Black G04 | 2 | 2015 Spr PSPL Classic 1 U11 | 3.67 | 1.04 |
| 2016-04-03 | FPSC Fury Black G04 | 1 | NW United Premier G04 | 7 | 2015 Spr PSPL Classic 1 U11 | 1.59 | 4.62 |
| 2016-03-26 | FPSC Fury Black G04 | 1 | Wenatchee Fire Black G04 | 4 | 2015 Spr PSPL Classic 1 U11 | 1.04 | 3.67 |
| 2016-03-20 | FPSC Fury Black G04 | 0 | ISC Gunners B G04 | 3 | 2015 Spr PSPL Classic 1 U11 | 0.85 | 1.72 |
| 2016-03-12 | FPSC Fury Black G04 | 2 | FME Fusion G04 | 1 | 2015 Spr PSPL Classic 1 U11 | 1.37 | 3.07 |
| 2016-03-05 | TC United G04 | 1 | FPSC Fury Black G04 | 4 | 2015 Spr PSPL Classic 1 U11 | 4.10 | 1.57 |
| 2016-02-20 | CWSA Navy G05 | 3 | FPSC Fury Black G04 | 3 | 2015 Spr PSPL Classic 1 U11 | 3.18 | 2.08 |
| 2015-12-05 | MVP Marauders Navy G04 | 1 | FPSC Fury Black G04 | 0 | 2015 PSPL WSPL U11 | 4.10 | 0.61 |
| 2015-11-22 | FPSC Fury Black G04 | 1 | MVP Marauders Navy G04 | 4 | 2015 PSPL WSPL U11 | 0.61 | 4.10 |
| 2015-11-21 | ISC Gunners A G04 | 4 | FPSC Fury Black G04 | 0 | 2015 PSPL WSPL U11 | 5.68 | 0.49 |
| 2015-11-15 | FPSC Fury Black G04 | 0 | ASE Emerald G04 | 4 | 2015 PSPL WSPL U11 | 0.37 | 7.01 |
| 2015-11-14 | Highline Premier Blue G04 | 5 | FPSC Fury Black G04 | 0 | 2015 PSPL WSPL U11 | 3.75 | 0.71 |
| 2015-11-07 | FPSC Fury Black G04 | 1 | Seattle Celtic Green G04 | 2 | 2015 PSPL WSPL U11 | 0.79 | 3.77 |
| 2015-10-25 | ASE Emerald G04 | 10 | FPSC Fury Black G04 | 1 | 2015 PSPL WSPL U11 | 7.01 | 0.37 |
| 2015-10-24 | Wenatchee Fire Black G04 | 3 | FPSC Fury Black G04 | 1 | 2015 PSPL WSPL U11 | 3.67 | 1.04 |
| 2015-10-18 | FPSC Fury Black G04 | 1 | ISC Gunners A G04 | 8 | 2015 PSPL WSPL U11 | 0.49 | 5.68 |
| 2015-09-26 | FPSC Fury Black G04 | 3 | Wenatchee Fire Black G04 | 4 | 2015 PSPL WSPL U11 | 1.04 | 3.67 |
| 2015-09-19 | FPSC Fury Black G04 | 0 | Highline Premier Blue G04 | 4 | 2015 PSPL WSPL U11 | 0.71 | 3.75 |
| 2015-09-13 | Seattle Celtic Green G04 | 7 | FPSC Fury Black G04 | 0 | 2015 PSPL WSPL U11 | 3.77 | 0.79 |
| 2015-08-23 | FPSC Fury Black G04 | 0 | Mukilteo Rush G04 | 2 | 2015 Xtreme Cup GU11 Gold | 1.63 | 1.75 |
| 2015-08-22 | FPSC Fury Black G04 | 2 | NSC Fury G04 | 0 | 2015 Xtreme Cup GU11 Gold | 2.24 | 1.31 |
| 2015-08-21 | SGESC Fusion G04 | 1 | FPSC Fury Black G04 | 3 | 2015 Xtreme Cup GU11 Gold | 0.46 | 5.02 |
| 2015-07-25 | Eastside FC Blue G04 | 8 | FPSC Fury Black G04 | 0 | 2015 Sounders FC Cup GU10-11 | 4.25 | 0.30 |

| date | home | | away | | venue | pred.home | pred.away |
|-------------|-----------------------|---|----------------------|---|------------------------------|------------------|------------------|
| 2015-07-25 | NW United Classic G05 | 1 | FPSC Fury Black G04 | 2 | 2015 Sounders FC Cup GU10-11 | 1.29 | 0.77 |
| 2015-07-24 | FPSC Fury Black G04 | 0 | ISC Gunners B G04 | 2 | 2015 Sounders FC Cup GU10-11 | 0.85 | 1.72 |
| 2015-07-19 | FPSC Fury Black G04 | 1 | Cascade FC Green G04 | 2 | 2015 KITG GU11 Red | 1.62 | 1.52 |
| 2015-07-18 | FME Fusion G04 | 5 | FPSC Fury Black G04 | 1 | 2015 KITG GU11 Red | 3.07 | 1.37 |
| 2015-07-18 | FPSC Fury Black G04 | 8 | Blue Angels -Unk G04 | 4 | 2015 KITG GU11 Red | 5.18 | 2.54 |